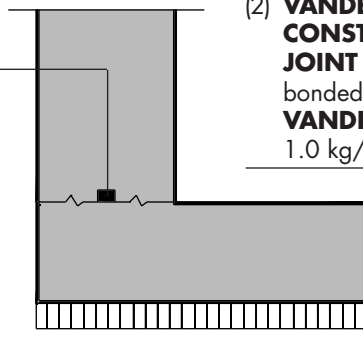


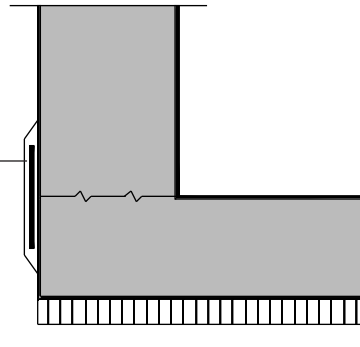
**New Construction  
Solution A**

(1) **VANDEX EXPASEAL  
B PLUS**



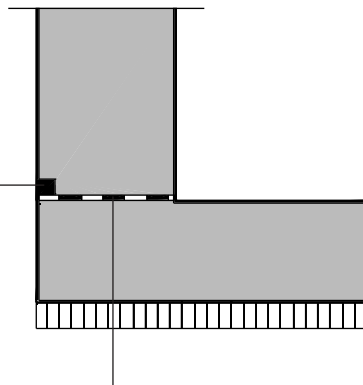
(2) **VANDEX  
CONSTRUCTION  
JOINT TAPE**  
bonded with  
**VANDEX BB 75 E,**  
1.0 kg/linear meter

**New Construction  
Solution B**



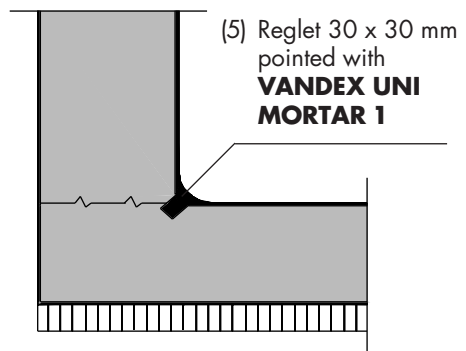
**New Construction  
Solution C**

(4) Reglet 30 x 30 mm  
pointed with  
**VANDEX UNI  
MORTAR 1**



(3) **VANDEX SUPER,**  
1.5 kg/m<sup>2</sup>

**Existing Structure  
Repair**



(5) Reglet 30 x 30 mm  
pointed with  
**VANDEX UNI  
MORTAR 1**

## Application Instructions:

### Solution A, New Construction

- 1.) VANDEX EXPASEAL B PLUS waterstops are glued to the joint surface with VANDEX UNIFLEX or mechanically fixed with nails (approx. 4–5 nails per linear meter). Ensure that the VANDEX EXPASEAL B PLUS is in firm contact with the surface of the substrate.

### Solution B, New Construction

- 2.) - The damp substrate must be sound, open-textured, clean and free from oil and grease.
  - Apply a first coat of VANDEX BB 75 E (0.6 kg/linear meter), at least 1 cm beyond the tape.
  - Place and embed the VANDEX CONSTRUCTION JOINT TAPE in the VANDEX BB 75 E coat.
  - Overcoat the VANDEX CONSTRUCTION JOINT TAPE with a second coat of VANDEX BB 75 E (0.4 kg/linear meter).

### Solution C, New Construction

- 3.) Apply one coat of VANDEX SUPER at the rate of 1.5 kg/m<sup>2</sup> to joint the surface just prior to casting the wall.
- 4.) Fill the reglet with VANDEX UNI MORTAR 1 flush to the surface, at a rate of approx. 1.8 kg/linear meter.

### Existing Structure - Repair

- 5.) Rout out a reglet approx. 30x30 mm along construction joints. Point the reglet and form a fillet with VANDEX UNI MORTAR 1.

The information contained herein is based on our longterm experience and the best of our knowledge. We can, however, make no guarantee since for a successful outcome, all circumstances in an individual case must be taken into consideration. Indications of quantities required are only averages which in certain cases might be greater.